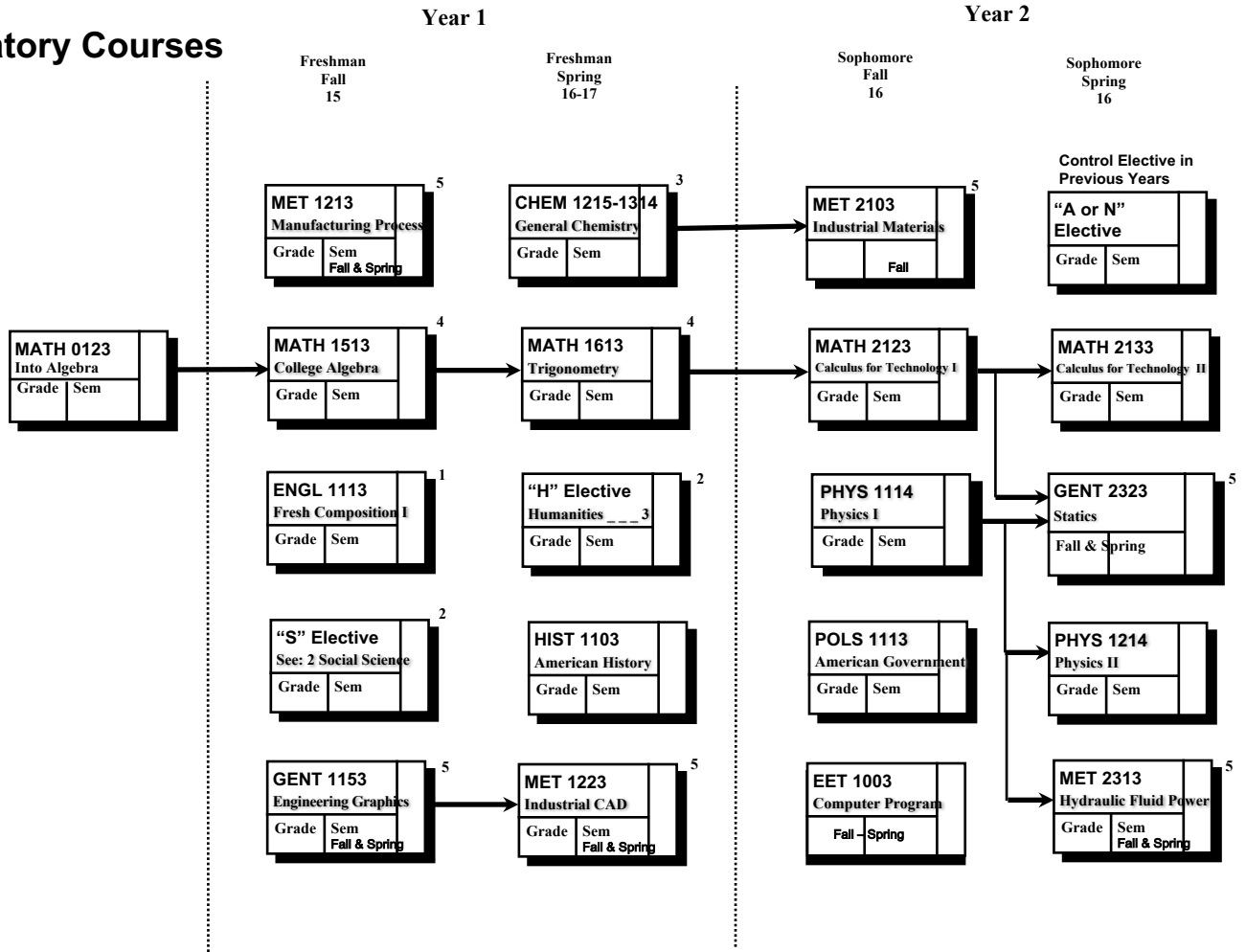


Name: _____

Advisor: _____

**College/Departmental Requirements
Mechanical Engineering Technology .**

Preparatory Courses



• A minimum average GPA of 2.00 is required in all courses with an engineering or engineering technology prefix.

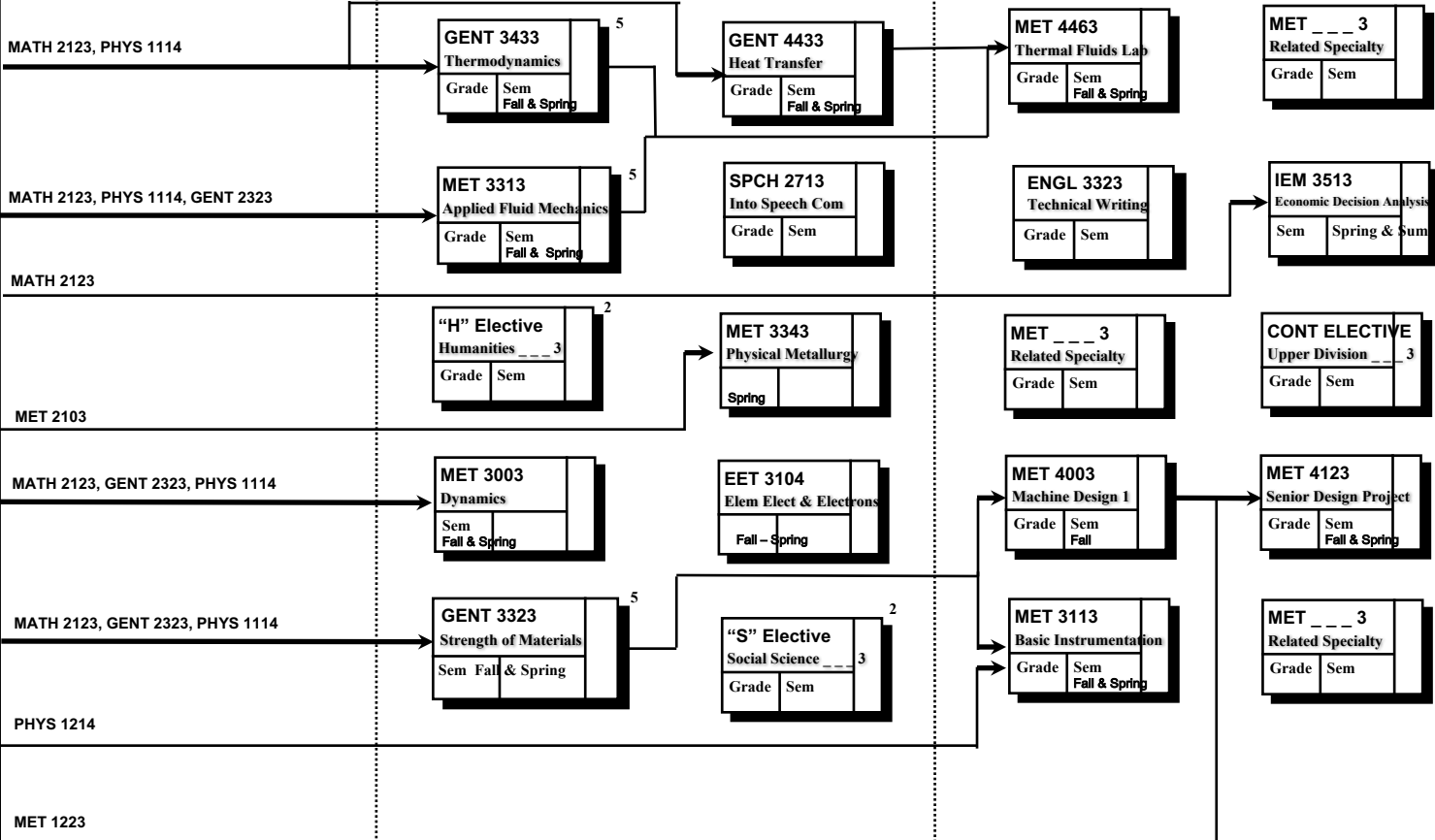
• NOTE: This flow chart is for planning purposes only. Students will be held responsible for degree requirements in effect at the time of matriculation (date at first enrollment) & any changes that are made, so long as these changes do not result in semester credit hours being added or do not delay graduation. (Academic Regulation 3.2)

1. Students with less than a "B" in ENGL 1113 or 1313 must take ENGL 1213 or 1413 and may not substitute ENGL 3323 for 1213. (Academic Regulation 3.5)
2. At least 6 hours designated (H) and at least 6 hours designated (S). Of these, 1 hr. must meet the International Dimension "I" and 1 hr. must meet the Diversity requirement "D".
3. Select one course from CHEM 1215, 1314, 1414.
4. ALEKS Exams for Mathematics Classes: Students are required to take an online examination using a system named ALEKS. The following website describes the exam, how to login and other details. Please read all of the website page before going to the link to the exam. Refer to the OSU Math Department website: <http://placement.okstate.edu/math>.
5. A grade of 'C' or better is required in a 1000 to 3000-level GENT or MET course in order to advance to a course for which the GENT or MET course is a prerequisite.

Name: _____
 Advisor: _____

Junior Fall 15 Junior Spring 16 Senior Fall 15 Senior Spring 15

PREREQUISITES



Other Requirements
Mechanical Engineering Technology

- A minimum of 40 hours must be upper division
- Communications 6hrs: ENGL 3323, SPCH 2713 or 3703 or 3723.
- MET Related Specialty 9 hrs.: MET 3413 or 3423 F/C, MET 3573 F/L, MET 4023 S/Y, MET 4033 F/Y, MET 4113 SuF/A, MET 4203 S/B, MET4303 S/L, MET 4313 S/C, MET 4503 Su/B
- Legend: Fall = F, Spring = S, Summer =Su; Alexander = A, Belanus = B, Chang = C, Yang = Y, Lewis = L.
- Common Upper Division Controlled Electives 3hrs: MGMT 3013, MGMT 3313, LSB 3213, MKTG 3213, ENGR, ENGR TECH, MATH, CHEM, PHYSICS, STATISTICS, or (See Above) for additional MET Related Specialty.
- For further information, contact the MET Program Director , Faculty or Director of Engineering Technology.
- A flexible study plan is designed to meet each student's individual goals.