

Name:  
Advisor:

# BACHELOR OF ARCHITECTURAL ENGINEERING

Oklahoma State University  
College of Engineering, Architecture & Technology

157 Semester Hours, 2017-2018

## ADMISSION REQUIREMENTS TO THE SCHOOL OF ARCHITECTURE

Admission to the School of Architecture is controlled by the general requirements for admission into Oklahoma State University.

Admittance into the Design Studios is open unless demand exceeds available space. In that case, the student's GPA may be a consideration for acceptance into ARCH 1216, 2116, and 2216. Students who have not already received a grade for the studio will be given first priority in enrollment.

## Preparatory Courses<sup>1</sup>

<b>MATH 1715</b>			
Coll Alg & Trig			
Grade	Sem		

<b>MATH 1513</b>			
Coll Algebra			
Grade	Sem		

<b>MATH 1613</b>			
Trigonometry			
Grade	Sem		

<b>ENGL 0123</b>			
Basic Comp			
Grade	Sem		

<b>POLS 1113</b>			
American Govt.			
Grade	Sem		

## FIRST YEAR

<b>ARCH 1112</b>			
Intro to Arch			
Grade	Sem		

<b>ARCH 1216</b>			
Arch Design I			
Grade	Sem		

<b>MATH 2144</b>			
Calculus I (A)			
Grade	Sem		

<b>PHYS 2014</b>			
General Physics (L,N)			
Grade	Sem		

<b>CHEM 1414</b>			
Gen. Chemistry (L,N)			
Grade	Sem		

<b>MATH 2153</b>			
Calculus II (A)			
Grade	Sem		

<b>ENGL 1113</b>			
Fresh Comp I			
Grade	Sem		

<b>ENGL 1213</b>			
Fresh Comp II			
Grade	Sem		

<b>POLS 1113</b>			
American Govt.			
Grade	Sem		

## SECOND YEAR

<b>ARCH 2116</b>			
Arch Design II			
Grade	Sem		

<b>ARCH 2216</b>			
Arch Design III			
Grade	Sem		

<b>ARCH 2263</b>			
Arch. Systems			
Grade	Sem		

<b>ENSC 2113</b>			
Statics			
Grade	Sem		

<b>ENSC 2143</b>			
Strength of Mat.			
Grade	Sem		

<b>ENGR 1412</b>			
Engr. Computer			
Grade	Sem		

<b>GEN ED (3)</b>			
Basic Level (S,D)			
Grade	Sem		

<b>ARCH 2003</b>			
Arch & Society (H I)			
Grade	Sem		

<b>HIST 1103</b>			
American Hist			
Grade	Sem		

## ADMISSION REQUIREMENTS TO PROFESSIONAL SCHOOL

Students from Architecture and Architectural Engineering who meet the criteria for consideration will be selected for admission to the Professional School in the School of Architecture.

Professional School Criteria:  
a) Obtained a minimum of 55 credit hours: including ARCH 1112, 1216, 2116, 2216, 2263, MATH 2144, ENSC 2113 and 2143, PHYS 2014, and ENGL 1113 with a Selection Grade point Average of 2.8.

For detailed explanation of the Professional School admission policy, obtain a copy of the application form from the School of Architecture Office.

The student will be held responsible for degree requirements in effect at the time of matriculation (date of first enrollment), plus any changes that are made, so long as these changes do not result in semester hours being added or do not delay graduation.

**NOTE: The School of Architecture requires a final grade of "C" or better in all ARCH prefix courses, substitutions for ARCH prefix courses, and prerequisites for ARCH prefix courses.**

**NOTE: This flow chart is for planning purposes only. Students matriculating in 2017 must meet the degree requirements as stated on the official degree requirement sheet dated "Academic Year 2017-2018."**

FLOW CHART NOTES:  
See the other side of this flow chart for General Education Requirements.

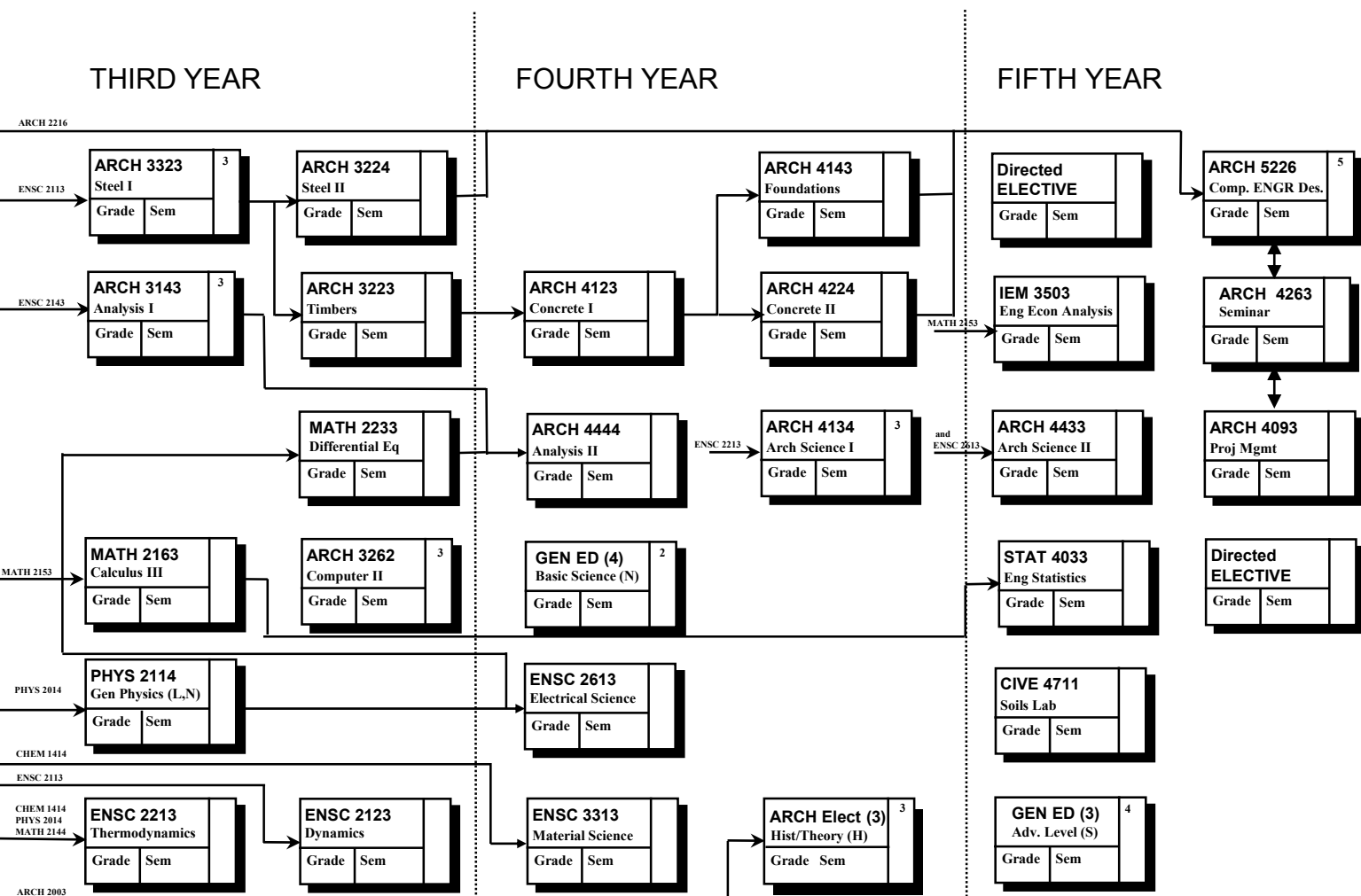
Shaded Areas Indicate Common Engineering Curriculum Requirements.

1. Preparatory courses may be used to meet GEN ED requirements but do not count towards the 157 Semester Credit Hours.

# BACHELOR OF ARCHITECTURAL ENGINEERING

## PROFESSIONAL SCHOOL OF ARCHITECTURAL ENGINEERING (STR)

Oklahoma State University  
College of Engineering, Architecture & Technology



### FLOW CHART NOTES (con't):

- Basic Science: Choose one from ASTR 1014, BIOL 1114, CHEM 1314, CHEM 1515, GEOL 1014 or GEOL 1144.
- Formal admission to Professional School required.
- Selected from list of approved courses.
- Senior Capstone course with co requisite enrollment of 4263 and 4\_\_3.

### GENERAL EDUCATION

Students are required to take at least 40 credit hours of General Education courses met by required courses and electives. These must include:

(A), 7 hours: MATH 2144 and 2153.

(H), 6 hours: ARCH 2003 and ARCH\_\_3 H/T course.

(S), 3 hours lower division (S) and 3 hours upper division (S): see list of approved upper (S) courses with focus on Urban Issues.

(I), 3 hours: ARCH 2003.

(D), 3 hours: Diversity component.

(N), 16 hours: PHYS 2014, 2114, CHEM 1414 and one course from ASTR 1014; BIOL 1114; CHEM 1314, 1515; GEOL 1014, 1114.

### ARCHITECTURE ELECTIVES

Students are required to take 6 credit hours of ARCH History and Theory; ARCH 2003 and one other ARCH H/T with an (H) designation.

### DIRECTED ELECTIVES

Students are required to take 6 credit hours from the following course: ARCH 5023, ARCH 5143, ARCH 6243, ARCH 6343 and ARCH 6543 CIVE 3623, CIVE 3614, CIVE 5403, CIVE 5433, CIVE 5533 and CIVE 5573 Up to 6 hours of upper division or graduate level courses approved by the department head and advisor.

For further information, go to

[www.architecture.ceat.okstate.edu](http://www.architecture.ceat.okstate.edu)